

# **NARROW WEB COATING SYSTEMS**

## **LABORATORY COATING SYSTEMS**

## **DRAW DOWN AND SHORT RUN SYSTEMS**

Please take the time to view this material about our coating equipment. Our goal is to provide our customers with customized solutions for their coating needs.

## **VITROM MFG. CONSULTANTS COATING TECHNOLOGY**

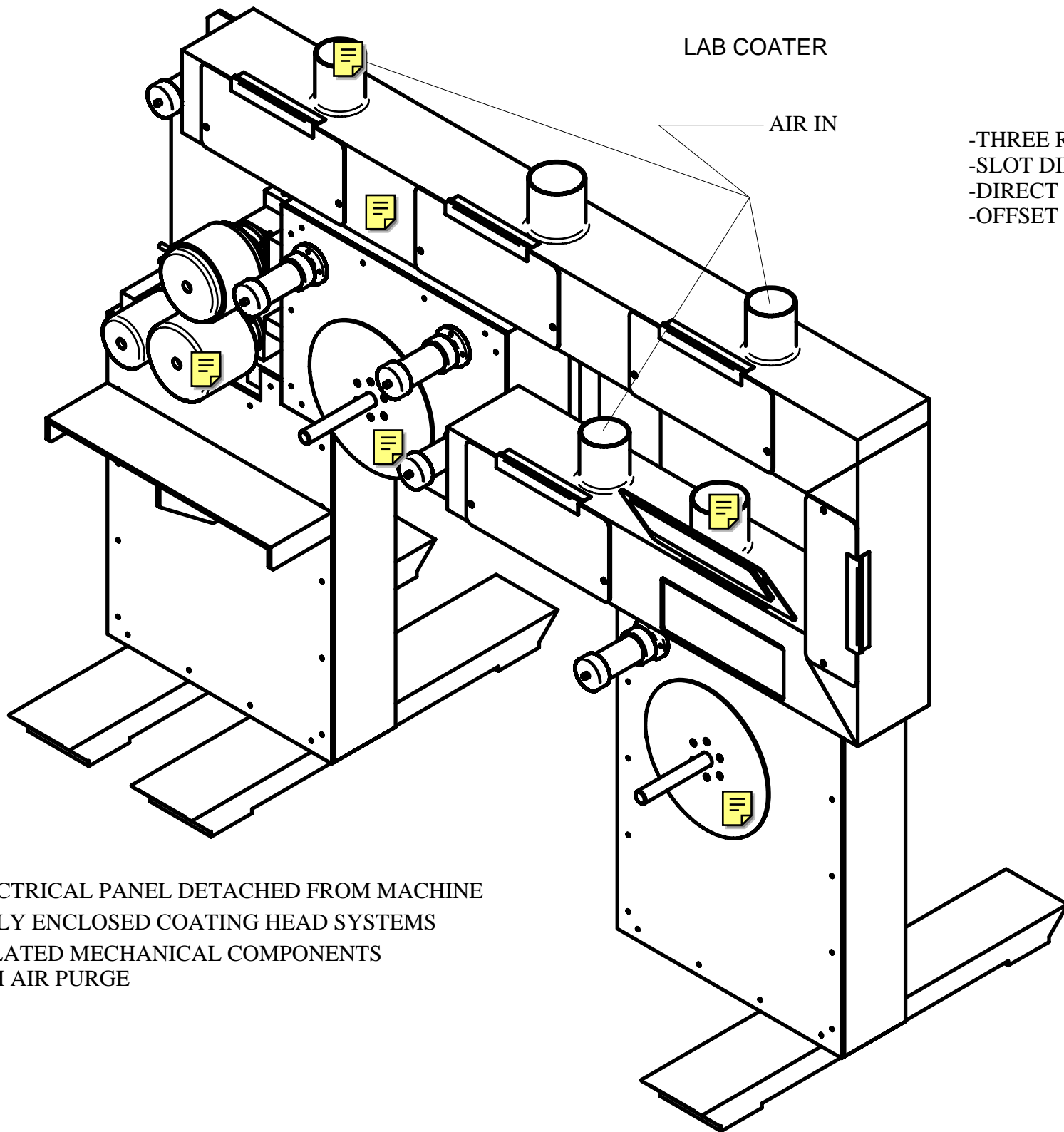
- SLOT DIE COATER
- MAYER ROD COATER
- FLOODED NIP BLADE COATER
- COMMA BAR COATER
- KNIFE COATER
- REVERSE ROLL COATER
- ROLL PRESURE
- OFFSET AND DIRECT GRAVURE COATER
- LAMINATORS
- CANTILIVERED ROLL DESIGN
- WEB SPEEDS TO 500 FPM
- FULLY INTEGRATED TENSION AND SPEED CONTROLS
- INTEGRATED LAMINATOR
- MULTIPLE DRYING AND CURING CAPABLLITIES

Vitrom Manufacturing Consultants is a company dedicated to design and fabrication of customized manufacturing equipment and the development of manufacturing processes. We provide our customers complete solutions for their manufacturing needs.

**[VISIT US AT WWW.VITROM.COM](http://WWW.VITROM.COM)**

**Vitrom Manufacturing Consultants**  
3941 Holly Drive, Suite K  
Tracy, CA 95304

**Tel: 209-834-1900**  
**Fax: 209-834-1039**  
**[Reis@Vitrom.com](mailto:Reis@Vitrom.com)**

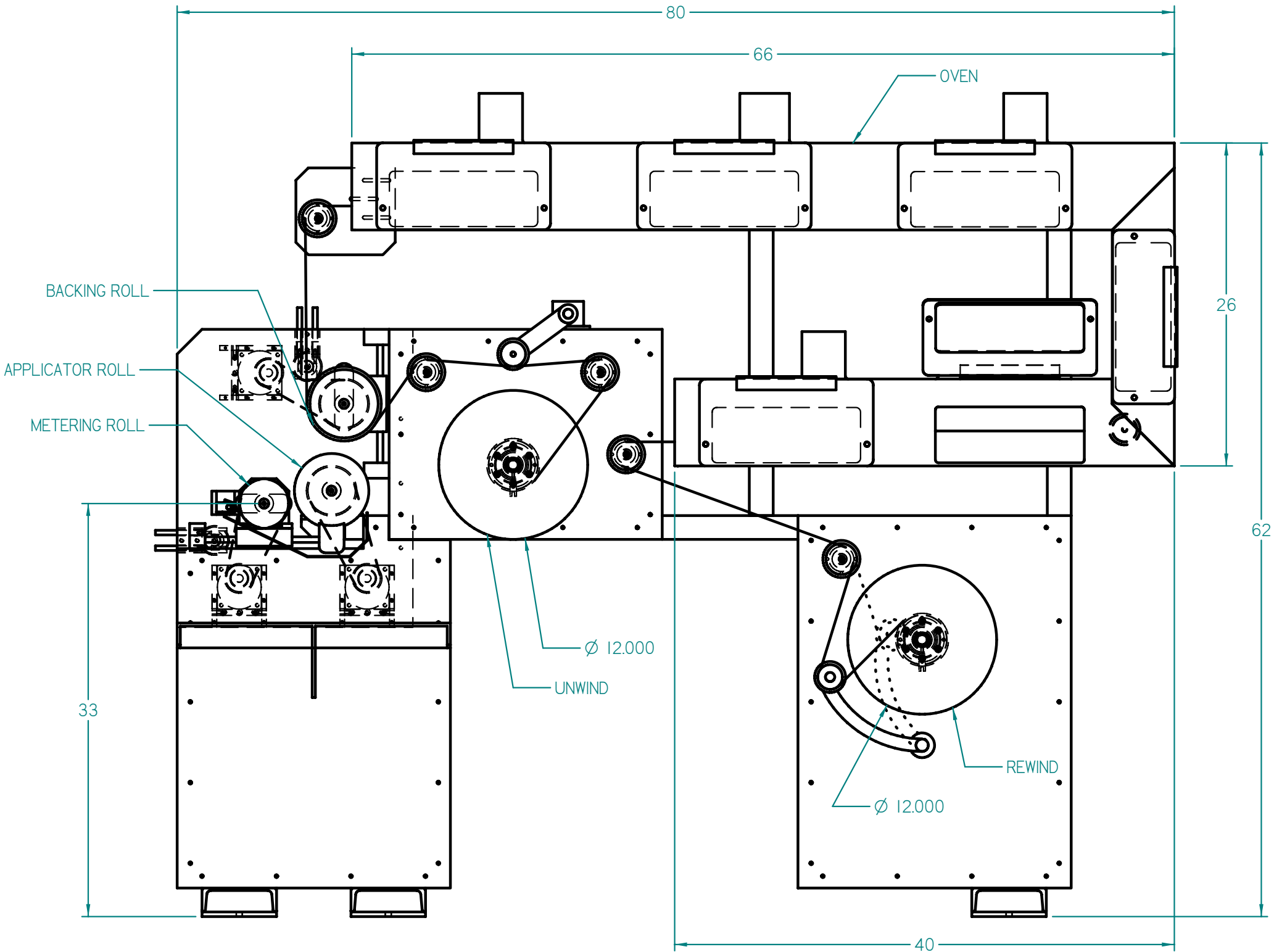


LAB COATER

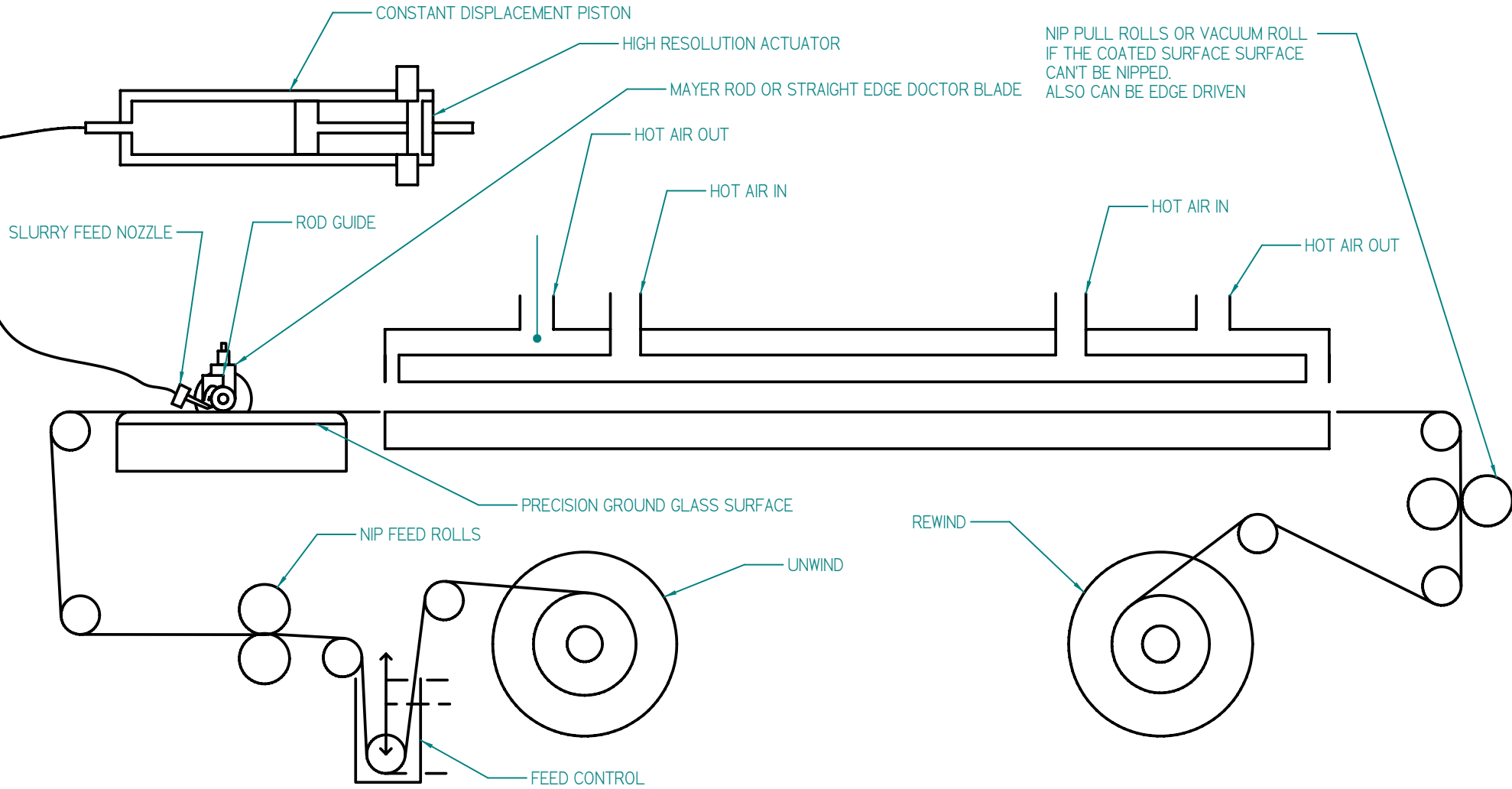
AIR IN

- THREE ROLL REVERSE
- SLOT DIE
- DIRECT GRAVURE
- OFFSET GRAVURE

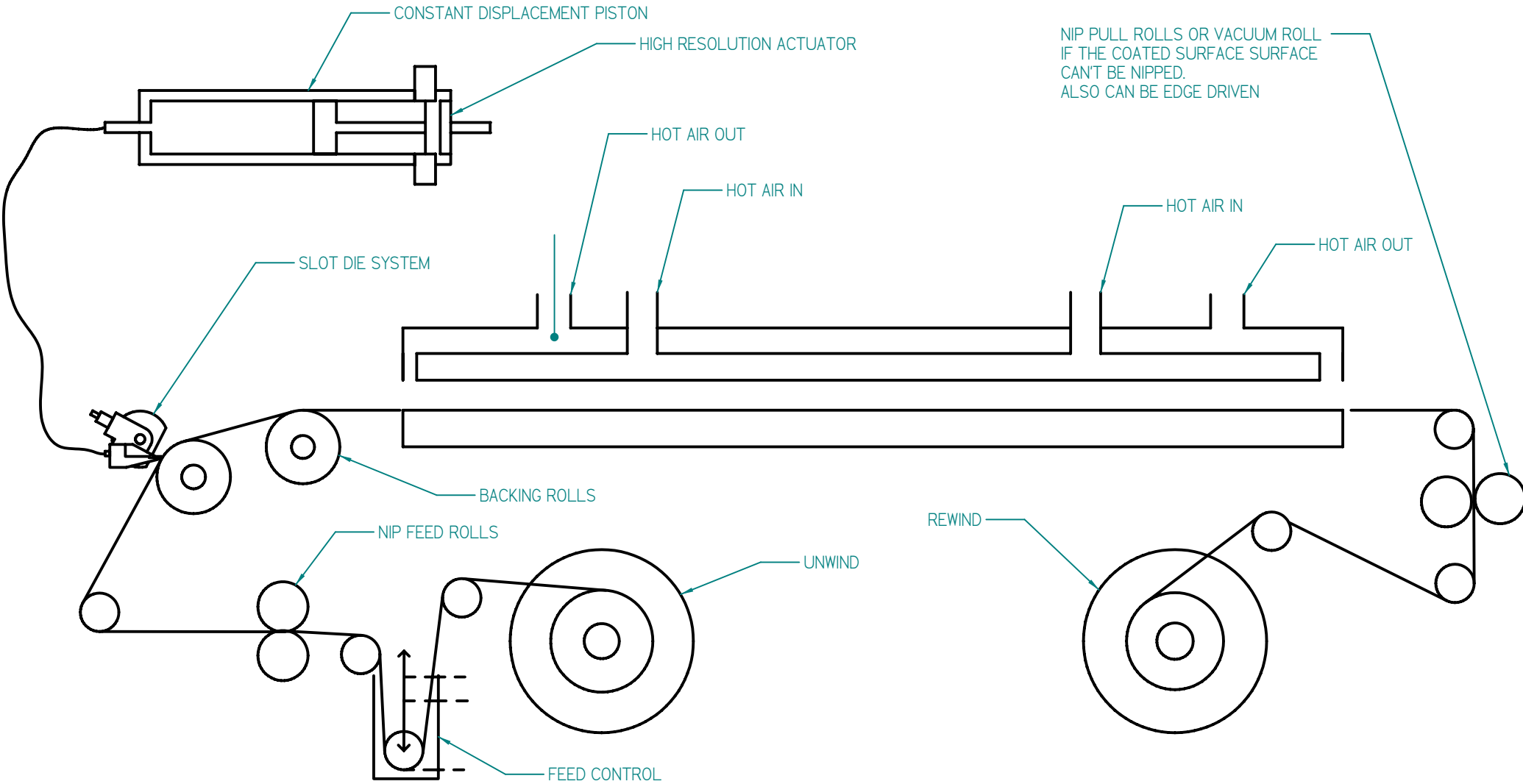
- ELECTRICAL PANEL DETACHED FROM MACHINE
- FULLY ENCLOSED COATING HEAD SYSTEMS
- ISOLATED MECHANICAL COMPONENTS WITH AIR PURGE



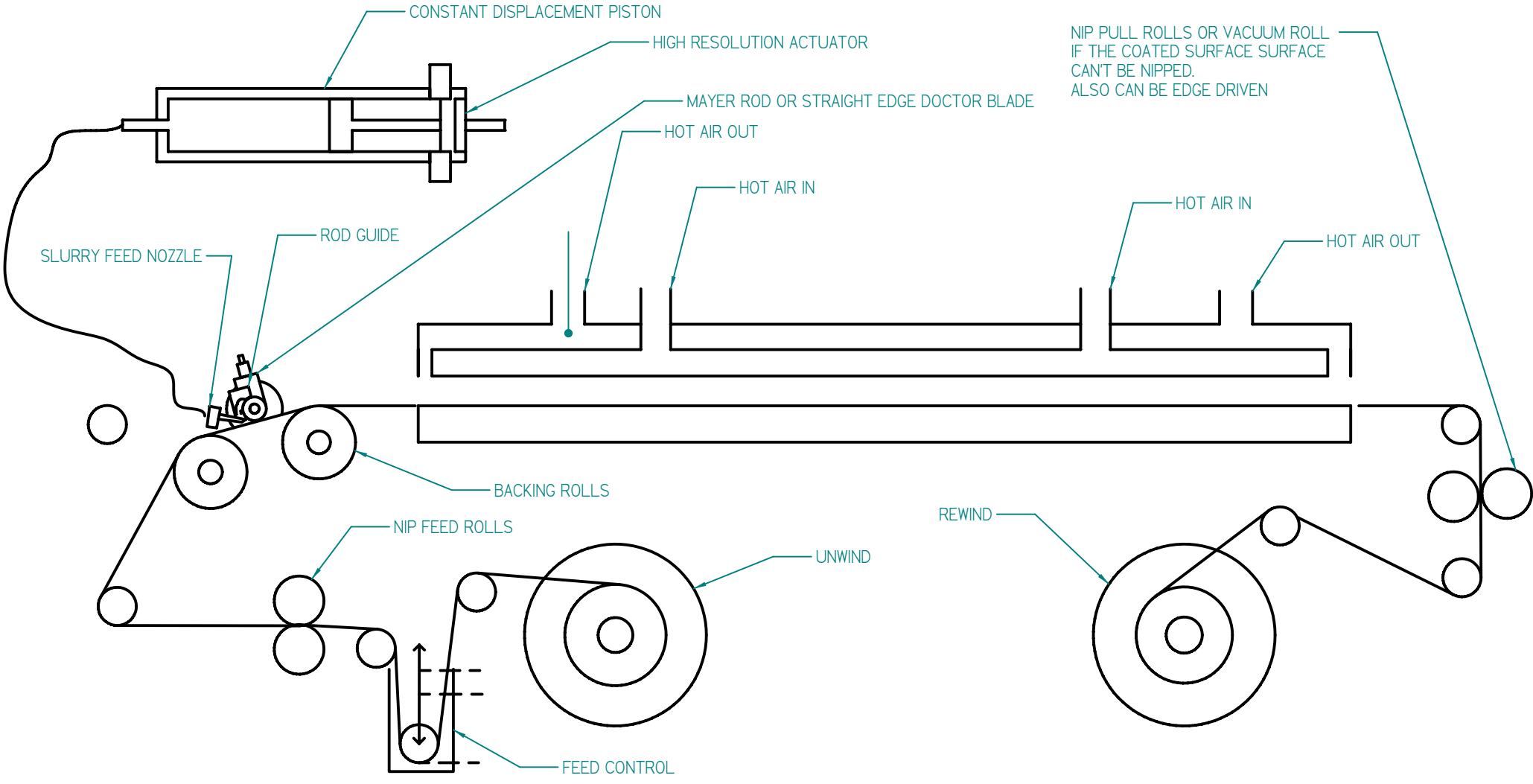
# PILOT COATER MAYER ROD OVER FLAT PLATE

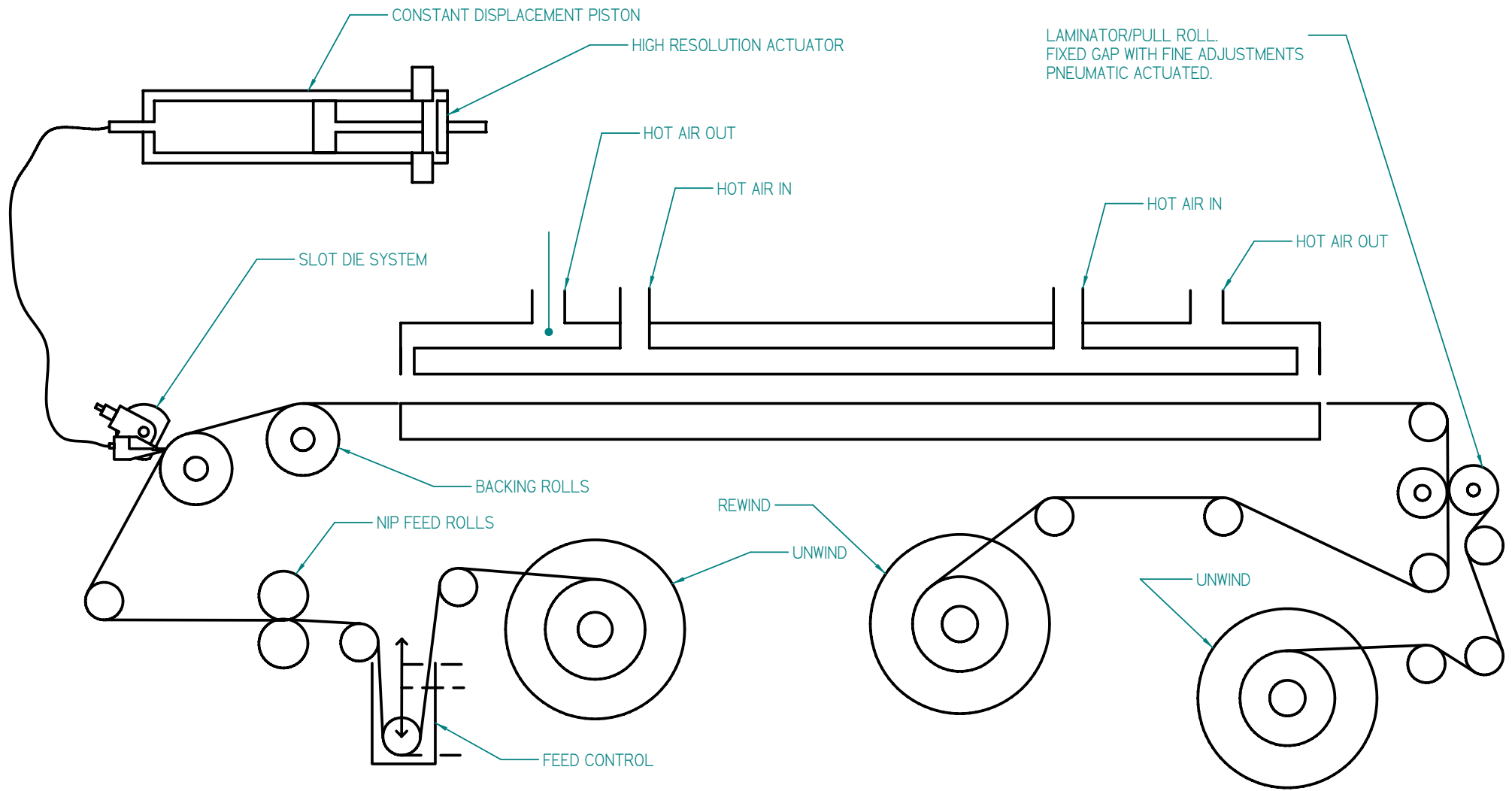


# PILOT COATER SLOT DIE COATER

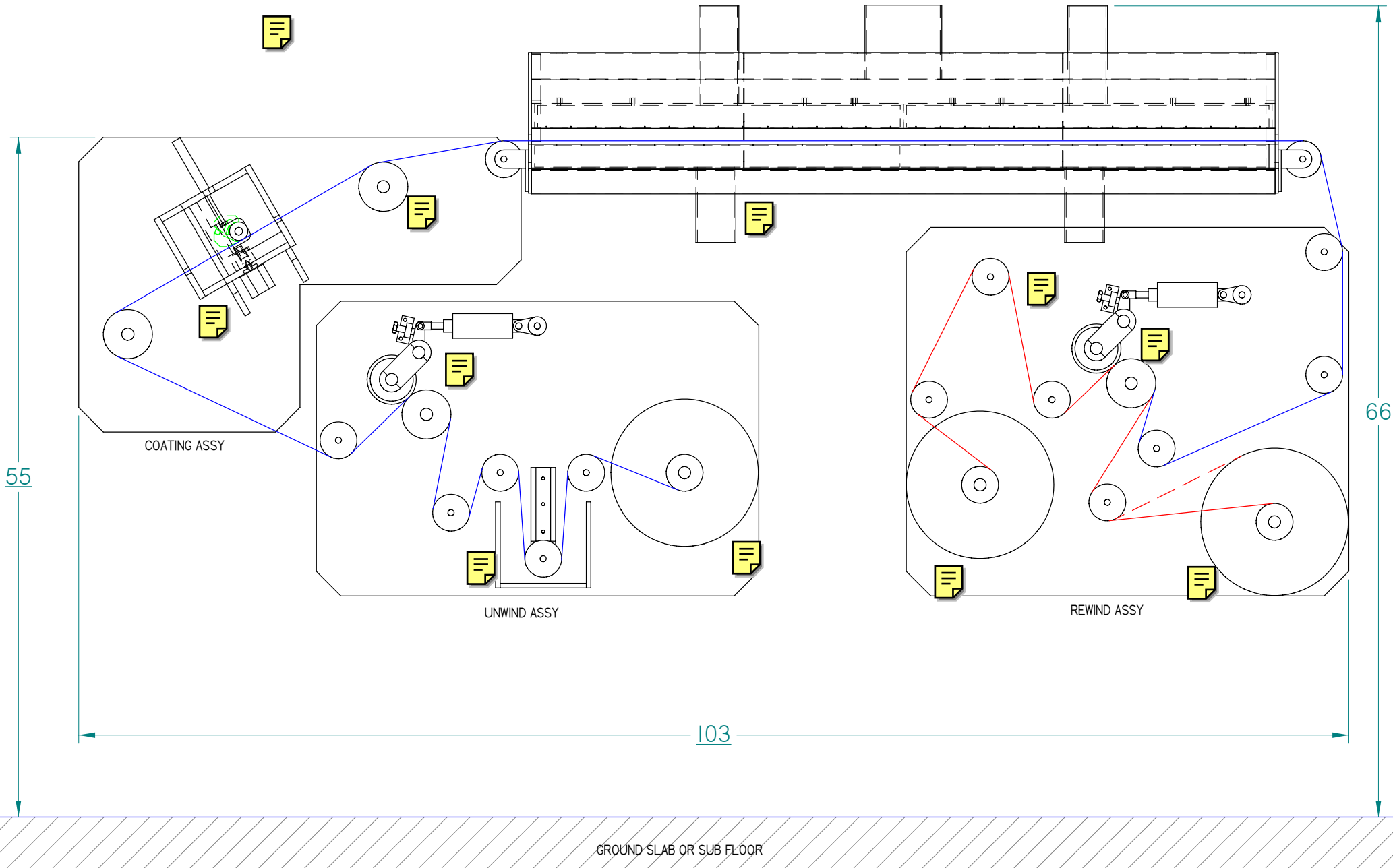


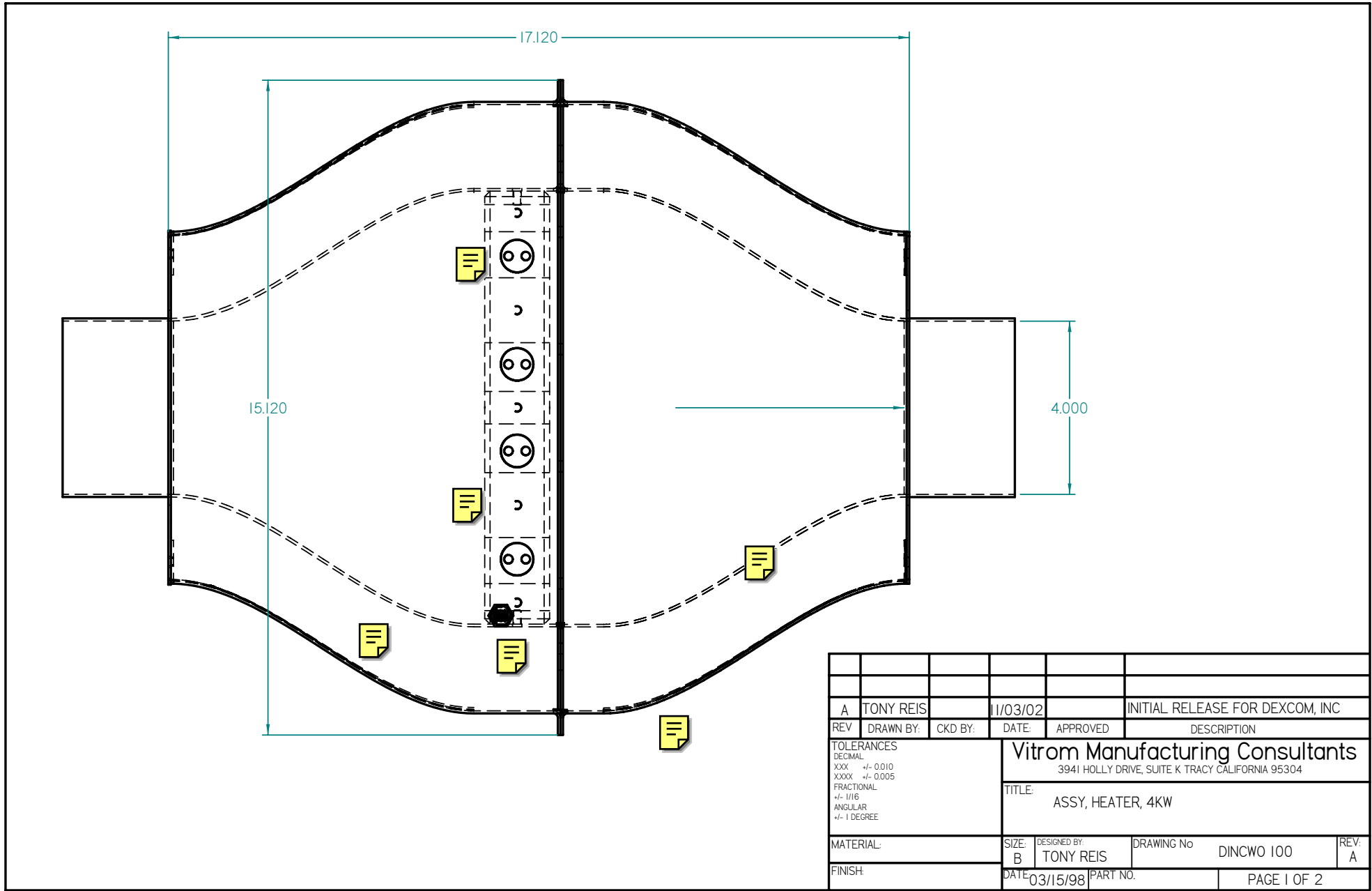
# PILOT COATER MAYER ROD OVER UNSUPPORTED FILM



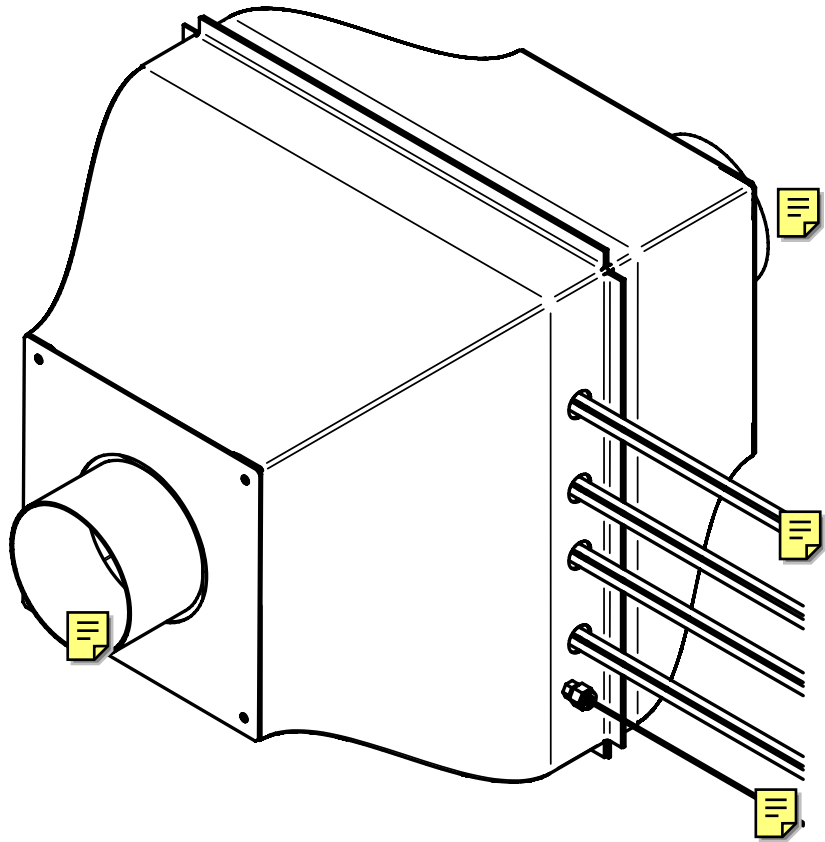


GENERAL MACHINE LAYOUT





A		TONY REIS	11/03/02	INITIAL RELEASE FOR DEXCOM, INC	
REV	DRAWN BY:	CKD BY:	DATE:	APPROVED	DESCRIPTION
TOLERANCES			<b>Vitrom Manufacturing Consultants</b> 3941 HOLLY DRIVE, SUITE K TRACY CALIFORNIA 95304		
DECIMAL XXX +/- 0.010 XXXX +/- 0.005 FRACTIONAL +/- 1/16 ANGULAR +/- 1 DEGREE			TITLE: ASSY, HEATER, 4KW		
MATERIAL:		SIZE:	DESIGNED BY:	DRAWING No	REV:
		B	TONY REIS	DINCWO 100	A
FINISH:		DATE:	PART NO.	PAGE 1 OF 2	
		03/15/98			



TOLERANCES DECIMAL XXX +/- 0.010 XXXX +/- 0.005 FRACTIONAL +/- 1/16 ANGULAR +/- 1 DEGREE		<b>Vitrom Manufacturing Consultants</b> 3941 HOLLY DRIVE, SUITE K TRACY CALIFORNIA 95304		
MATERIAL:		TITLE: ASSY, HEATER, 4KW		
SIZE: B	DESIGNED BY: TONY REIS	DRAWING No: DINCWO 100	REV: A	
FINISH:	DATE: 03/15/98	PART NO.	PAGE 2 OF 2	